

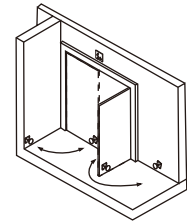
# DOOR HOLDER SERIES



YD-601/601L

## Basic Wall Mount Door Holder

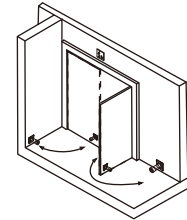
Size: 80Lx80Wx40H(mm)  
 Size: 90Lx90Wx47H(mm)  
 Holding force: 50kg(110Lbs)  
 Holding force: 180kg(350Lbs)(YD-601L)  
 Voltage: 12/24VDC ± 10%(Adjustable)  
 Current: 12V/140mA 24V/70mA  
 Suitable for: Smoke proof doors  
 Weight: 0.85kg/1.0kg



YD-602/602L

## Extended Wall Mount Door Holder

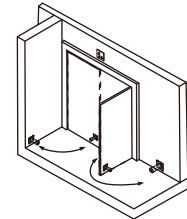
Size: 80Lx80Wx105H(mm)  
 Size: 90Lx90Wx114H(mm)  
 Holding force: 50kg(110Lbs)  
 Holding force: 180kg(350Lbs)(YD-602L)  
 Voltage: 12/24VDC ± 10%(Adjustable)  
 Current: 12V/140mA 24V/70mA  
 Suitable for: Smoke proof doors  
 Weight: 1.0kg/1.6kg



YD-602-S/602L-S

## Extended Wall Mount Door Holder with Signal

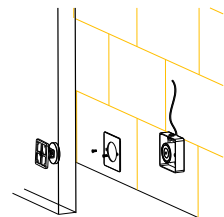
Size: 80Lx80Wx105H(mm)  
 Size: 90Lx90Wx114H(mm)  
 Holding force: 50kg(110Lbs)  
 Holding force: 180kg(350Lbs)(YD-602L-S)  
 Voltage: 12/24VDC ± 10%(Adjustable)  
 Current: 12V/140mA 24V/70mA  
 Signal output: NO/NC/COM  
 Suitable for: Smoke proof doors  
 Weight: 1.0kg/1.6kg



YD-603

## Mortise Mount Door Holder

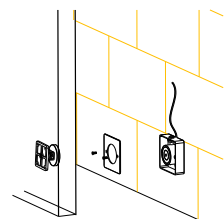
Size: 88Lx88Wx27H(mm)  
 Holding force: 50kg(110Lbs)  
 Voltage: 24VDC ± 10%(12V Need order)  
 Current: 12V/180mA 24V/70mA  
 Suitable for: Smoke proof doors  
 Optional: Press button to release the door  
 Weight: 1.0kg



YD-603US

## American Type Wall Mount Door Holder

Size: 114Lx70Wx29H(mm)  
 Holding force: 50kg(110Lbs)  
 Voltage: DC 12/24V(24V for factory settings)  
 Current: 12V/180mA 24V/70mA  
 Material: 304 stainless steel, wire draw finishing  
 Suitable for: Smoke proof doors  
 Optional: Press button to release the door  
 Weight: 1.0kg



YD-604/604-S

## Wall Mount Door Holder with Signal

Size: 70Lx40Wx85H(mm)  
 Holding force: 50kg(110Lbs)  
 Voltage: 24VDC ± 10%(12V Need order)  
 Current: 12V/180mA 24V/70mA  
 Signal output: NO/NC/COM (YD-604-S)  
 Suitable for: Smoke proof doors  
 Optional: Press button to release the door  
 Weight: 0.9kg

